

# ClearOne®

COLLABORATE® Versa 100

Quick Start Guide



## COLLABORATE VERSA 100

### COMPONENTS INCLUDED

The COLLABORATE Versa 100 includes the UNITE™ 200 PTZ Camera, CHAT 150 group USB speakerphone, and Spontania Standard license

<b>COLLABORATE Versa 100</b>	
	910-2100-003 UNITE 200 PTZ camera, power supply, USB cable, and camera remote control.
	910-156-200 CHAT 150 Speakerphone with USB cable.
	910-2001-000-1 Spontania Standard 1 license

### CONNECTING THE CHAT 150 AND UNITE CAMERA

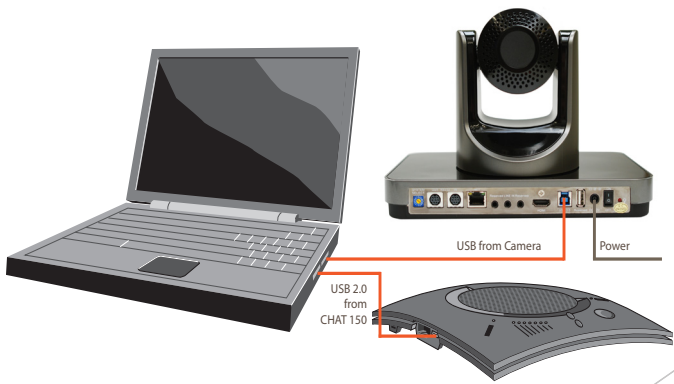
Use the included USB 2.0 cable to connect the CHAT 150 and the included USB cable to connect the UNITE 200 camera to the PC.

**Notes:** Connect the UNITE 200 Camera to a USB 3.0 or USB 2.0 port of the PC. You may optionally connect using an appropriate USB Hub.

For information regarding the CHAT 150, and the UNITE 200 refer to the appropriate User's Manual.

[http://www.clearone.com/products\\_chat150](http://www.clearone.com/products_chat150)

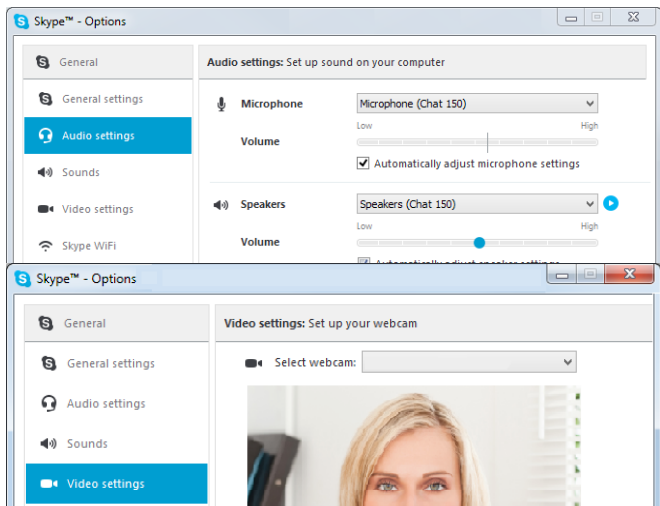
[http://www.clearone.com/products\\_unite200\\_ptz\\_camera](http://www.clearone.com/products_unite200_ptz_camera)



# COLLABORATE VERSA 100

## CONFIGURING YOUR SOFTWARE

ClearOne Spontania defaults to the system selected devices, but depending on your Unified Communications software, these devices may or may not become default. Applications, like Skype, might require you to select these devices before the application can use them.



# CLEARONE CONTACTS

### HEADQUARTERS:

#### Salt Lake City, UT USA

5225 Wiley Post Way  
Suite 500  
Salt Lake City, UT 84116

**Sales:** 800-707-6694

**Toll Free:** 800.945.7730

**Fax:** 801.303.5711

**e-mail:** sales@clearone.com

#### Europe & Oceania

**Tel:** +44.1454.616.977

**e-mail:** global@clearone.com

#### Latin America

**Tel:** +801.974.3621

**e-mail:** global@clearone.com

#### TechSales

**Tel:** 800.707.6694

**e-mail:** techsales@clearone.com

#### Technical Support

**Tel:** +800.283.5936

**e-mail:** techsupport@clearone.com

#### Asia Pacific

**Tel:** +852.3590.4526

**e-mail:** global@clearone.com

#### Middle East

**Tel:** +852.3590.4526

**e-mail:** global@clearone.com

© 2016 ClearOne, Inc. All rights reserved.

Information in this document is subject to change without notice. QSG-0026-001 Revision 1.1, March, 2016